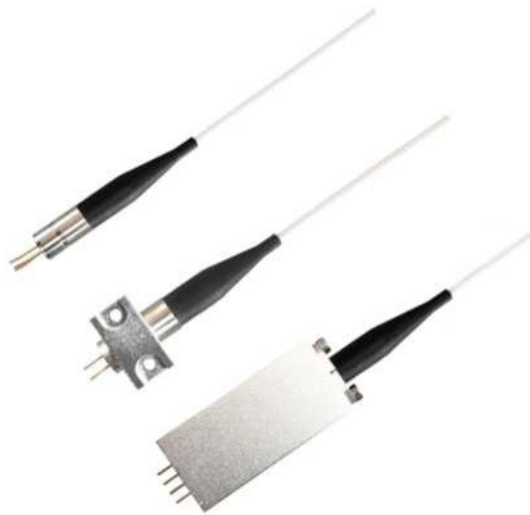


Single Mode Fiber Coupled Laser Module



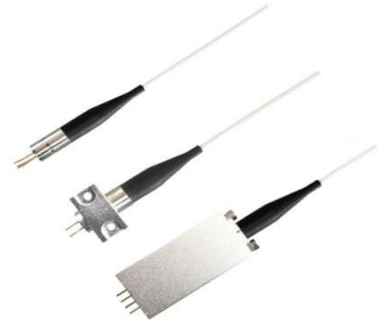
2022 V1

For customized projects please Contact us:

sales@simtrum.cn

SIMTRUM offers High Coupling Efficient Solution for 400nm~1650nm Pigtailed Laser Module with Single Mode Fiber and Polarization Maintaining Fiber, the output power can be up to 100mW. We adopt a unique technique to get high Polarization Extinction Ratio (PER), which is up to 20dB with Low Noise Laser Output.

With SM and PM Fiber, it can get the Gauss Beam which is the Single Transverse Mode Beam and the M^2 value is less 1.3. Meanwhile, the TE Cooler and Photodiode is optional for customers, we can integrate them into the Laser Module according to the customer's requirement. SIMTRUM also offers Customized solutions for Pigtailed Laser Modules, such as Customized Wavelength and Customized Power to meet the special needs of customers.

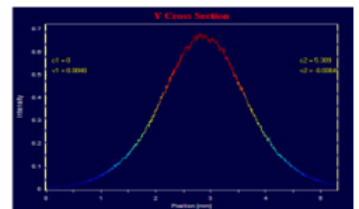
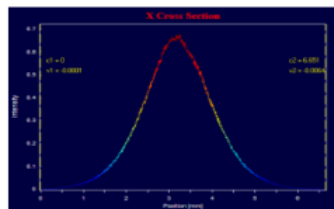
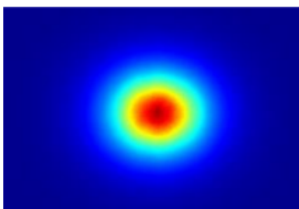


SIMTRUM uses laser welding technology to guarantee the long-term reliability of the laser structure. To ensure long-term reliability, each laser diode will undergo rigorous testing and aging in the factory.

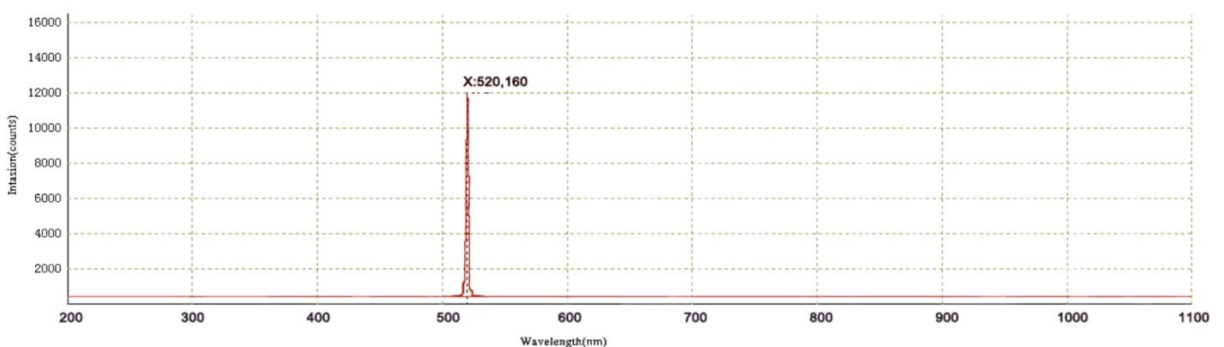
Features

- 400nm~1650nm
- SM and PM Fiber
- 1mW~100mW Output Power
- PER up to 20dB
- Built-in TE Cooler Optional
- Built-in Photodiode Optional
- Long Lifetime
- High Stability
- Customized Wavelength
- Customized Output Power

Laser Beam Profile

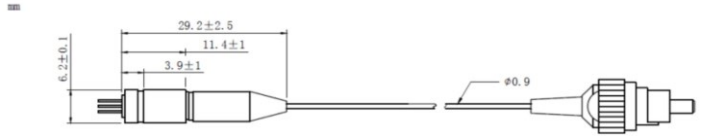


Spectrum Sample

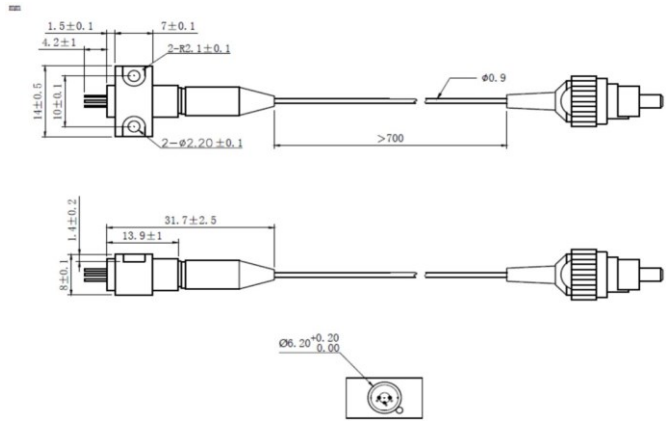


Packaging Information

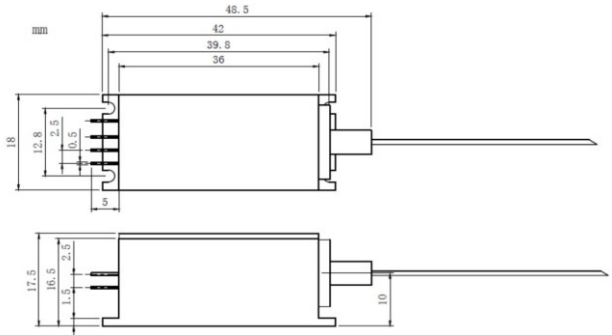
Coaxial Package View



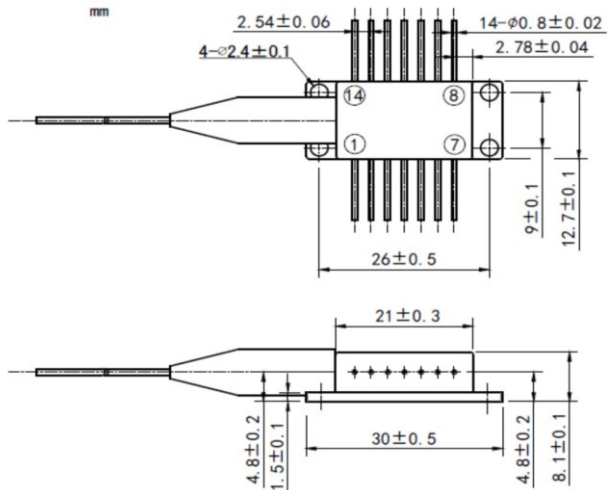
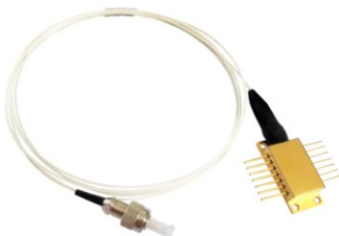
B8 Package View (with heat-sink)



8-Pin Package View (built-in-TEC)



14-Pin Package View (built-in-TEC)



Specifications

Wavelength	Part Number	Output Power	Fiber Type	Fiber Core	Package	Connector	PD	TEC
400nm	STLP-400-015m-PD	15mW	UV SMF	3um	Coaxial	FC/PC	V	X
	STLX-400-015m-H8-T-PD	15mW	UV SMF	3um	8-Pin	FC/PC	V	V
	STLP-400-030m-PD	30mW	UV SMF	3um	Coaxial	FC/PC	V	X
	STLX-400-030m-H8-T-PD	30mW	UV SMF	3um	8-Pin	FC/PC	V	V
	STLP-400-015m-PM-PD	15mW	UV PMF	3um	Coaxial	FC/APC	V	X
	STLX-400-015m-PM-H8-T-PD	15mW	UV PMF	3um	8-Pin	FC/APC	V	V
	STLP-400-030m-PM-PD	30mW	UV PMF	3um	Coaxial	FC/APC	V	X
	STLX-400-030m-PM-H8-T-PD	30mW	UV PMF	3um	8-Pin	FC/APC	V	V
405nm	STLP-405-001m-PD	1mW	UV SMF	3um	Coaxial	FC/PC	V	X
	STLP-405-015m-PD	15mW	UV SMF	3um	Coaxial	FC/PC	V	X
	STLX-405-015m-H8-T-PD	15mW	UV SMF	3um	8-Pin	FC/PC	V	V
	STLP-405-030m-PD	30mW	UV SMF	3um	Coaxial	FC/PC	V	X
	STLX-405-030m-H8-T-PD	30mW	UV SMF	3um	8-Pin	FC/PC	V	V
	STLP-405-040m-PD	40mW	UV SMF	3um	Coaxial	FC/PC	V	X
	STLX-405-040m-H8-T-PD	40mW	UV SMF	3um	8-Pin	FC/PC	V	V
	STLP-405-050m-PD	50mW	UV SMF	3um	Coaxial	FC/PC	V	X
	STLX-405-050m-H8-T-PD	50mW	UV SMF	3um	8-Pin	FC/PC	V	V
	STLP-405-015m-PM-PD	15mW	UV PMF	3um	Coaxial	FC/APC	V	X
	STLX-405-015m-PM-H8-T-PD	15mW	UV PMF	3um	8-Pin	FC/APC	V	V
	STLP-405-030m-PM-PD	30mW	UV PMF	3um	Coaxial	FC/APC	V	X
	STLX-405-030m-PM-H8-T-PD	30mW	UV PMF	3um	8-Pin	FC/APC	V	V
	STLP-405-040m-PM-PD	40mW	UV PMF	3um	Coaxial	FC/APC	V	X
	STLX-405-040m-PM-H8-T-PD	40mW	UV PMF	3um	8-Pin	FC/APC	V	V
	STLP-405-050m-PM-PD	50mW	UV PMF	3um	Coaxial	FC/APC	V	X
STLX-405-050m-PM-H8-T-PD	50mW	UV PMF	3um	8-Pin	FC/APC	V	V	
445nm	STLP-445-015m	15mW	SMF	3um	Coaxial	FC/PC	X	X
	STLX-445-015m-H8-T	15mW	SMF	3um	8-Pin	FC/PC	O	V
	STLX-445-015m-H8-T-PD	15mW	SMF	3um	8-Pin	FC/PC	V	V
	STLP-445-030m	30mW	SMF	3um	Coaxial	FC/PC	X	X
	STLX-445-030m-H8-T	30mW	SMF	3um	8-Pin	FC/PC	O	V
	STLX-445-030m-H8-T-PD	30mW	SMF	3um	8-Pin	FC/PC	V	V
	STLP-445-040m	40mW	SMF	3um	Coaxial	FC/PC	X	X
	STLX-445-040m-H8-T	40mW	SMF	3um	8-Pin	FC/PC	O	V
	STLP-445-050m	50mW	SMF	3um	Coaxial	FC/PC	X	X
	STLX-445-050m-H8-T	50mW	SMF	3um	8-Pin	FC/PC	O	V
	STLP-445-070m	70mW	SMF	3um	Coaxial	FC/PC	X	X
	STLX-445-070m-H8-T	70mW	SMF	3um	8-Pin	FC/PC	O	V
	STLX-445-015m-PM-H8-T-PD	15mW	PMF	3um	8-Pin	FC/APC	V	V
	STLP-445-030m-PM	30mW	PMF	3um	Coaxial	FC/APC	X	X
	STLX-445-030m-PM-H8-T	30mW	PMF	3um	8-Pin	FC/APC	O	V
	STLX-445-030m-PM-H8-T-PD	30mW	PMF	3um	8-Pin	FC/APC	V	V
	STLP-445-050m-PM	50mW	PMF	3um	Coaxial	FC/APC	X	X
	STLX-445-050m-PM-H8-T	50mW	PMF	3um	8-Pin	FC/APC	O	V
	STLP-445-050m	50mW	SMF-28	9um	Coaxial	FC/PC	X	X
	STLX-445-050m-H8-T	50mW	SMF-28	9um	8-Pin	FC/PC	O	V
STLP-445-080m	80mW	SMF-28	9um	Coaxial	FC/PC	X	X	
STLX-445-080m-H8-T	80mW	SMF-28	9um	8-Pin	FC/PC	O	V	
STLP-445-100m	100mW	SMF-28	9um	Coaxial	FC/PC	X	X	
STLX-445-100m-H8-T	100mW	SMF-28	9um	8-Pin	FC/PC	O	V	

Note V – yes, N – No, O – Optional

Specifications

Wavelength	Part Number	Output Power	Fiber Type	Fiber Core	Package	Connector	PD	TEC
460nm	STLP-460-030m	30mW	SMF	3um	Coaxial	FC/PC	X	X
	STLX-460-030m-H8-T	30mW	SMF	3um	8-Pin	FC/PC	O	V
	STLP-460-050m	50mW	SMF	3um	Coaxial	FC/PC	X	X
	STLX-460-050m-H8-T	50mW	SMF	3um	8-Pin	FC/PC	O	V
	STLP-460-030m-PM	30mW	PMF	3um	Coaxial	FC/APC	X	X
	STLX-460-030m-PM-H8-T	30mW	PMF	3um	8-Pin	FC/APC	O	V
	STLP-460-050m-PM	50mW	PMF	3um	Coaxial	FC/APC	X	X
	STLX-460-050m-PM-H8-T	50mW	PMF	3um	8-Pin	FC/APC	O	V
	STLP-460-080m	80mW	SMF-28	9um	Coaxial	FC/PC	X	X
	STLX-460-080m-H8-T	80mW	SMF-28	9um	8-Pin	FC/PC	O	V
473nm	STLP-473-010m	10mW	SMF	3um	Coaxial	FC/PC	X	X
	STLX-473-010m-H8-T	10mW	SMF	3um	8-Pin	FC/PC	O	V
	STLP-473-020m	20mW	SMF	3um	Coaxial	FC/PC	X	X
	STLX-473-020m-H8-T	20mW	SMF	3um	8-Pin	FC/PC	O	V
	STLP-473-010m-PM	10mW	PMF	3um	Coaxial	FC/APC	X	X
	STLX-473-010m-PM-H8-T	10mW	PMF	3um	8-Pin	FC/APC	O	V
	STLP-473-020m-PM	20mW	PMF	3um	Coaxial	FC/APC	X	X
	STLX-473-020m-PM-H8-T	20mW	PMF	3um	8-Pin	FC/APC	O	V
480nm	STLP-480-010m	10mW	SMF	3um	Coaxial	FC/PC	X	X
	STLX-480-010m-H8-T	10mW	SMF	3um	8-Pin	FC/PC	O	V
	STLP-480-020m	20mW	SMF	3um	Coaxial	FC/PC	X	X
	STLX-480-020m-H8-T	20mW	SMF	3um	8-Pin	FC/PC	O	V
	STLP-480-010m-PM	10mW	PMF	3um	Coaxial	FC/APC	X	X
	STLX-480-010m-PM-H8-T	10mW	PMF	3um	8-Pin	FC/APC	O	V
	STLP-480-020m-PM	20mW	PMF	3um	Coaxial	FC/APC	X	X
	STLX-480-020m-PM-H8-T	20mW	PMF	3um	8-Pin	FC/APC	O	V
488nm	STLP-488-010m	10mW	SMF	3um	Coaxial	FC/PC	X	X
	STLX-488-010m-H8-T	10mW	SMF	3um	8-Pin	FC/PC	O	V
	STLX-488-010m-H8-T-PD	10mW	SMF	3um	8-Pin	FC/PC	V	V
	STLP-488-020m	20mW	SMF	3um	Coaxial	FC/PC	X	X
	STLX-488-020m-H8-T	20mW	SMF	3um	8-Pin	FC/PC	O	V
	STLX-488-020m-H8-T-PD	20mW	SMF	3um	8-Pin	FC/PC	V	V
	STLP-488-030m	30mW	SMF	3um	Coaxial	FC/PC	X	X
	STLX-488-030m-H8-T	30mW	SMF	3um	8-Pin	FC/PC	O	V
	STLP-488-010m-PM	10mW	PMF	3um	Coaxial	FC/APC	X	X
	STLX-488-010m-PM-H8-T	10mW	PMF	3um	8-Pin	FC/APC	O	V
	STLX-488-010m-PM-H8-T-PD	10mW	PMF	3um	8-Pin	FC/APC	V	V
	STLP-488-020m-PM	20mW	PMF	3um	Coaxial	FC/APC	X	X
	STLX-488-020m-PM-H8-T	20mW	PMF	3um	8-Pin	FC/APC	O	V
	STLP-488-030m-PM	30mW	PMF	3um	Coaxial	FC/APC	X	X
	STLX-488-030m-PM-H8-T	30mW	PMF	3um	8-Pin	FC/APC	O	V
	STLP-488-020m	20mW	SMF-28	9um	Coaxial	FC/PC	X	X
STLX-488-020m-H8-T	20mW	SMF-28	9um	8-Pin	FC/PC	O	V	

Note V – yes, N – No, O – Optional

Specifications

Wavelength	Part Number	Output Power	Fiber Type	Fiber Core	Package	Connector	PD	TEC
495nm	STLP-495-010m	10mW	SMF	3um	Coaxial	FC/PC	X	X
	STLX-495-010m-H8-T	10mW	SMF	3um	8-Pin	FC/PC	O	V
	STLP-495-020m	20mW	SMF	3um	Coaxial	FC/PC	X	X
	STLX-495-020m-H8-T	20mW	SMF	3um	8-Pin	FC/PC	O	V
	STLP-495-010m-PM	10mW	PMF	3um	Coaxial	FC/APC	X	X
	STLX-495-010m-PM-H8-T	10mW	PMF	3um	8-Pin	FC/APC	O	V
	STLP-495-020m-PM	20mW	PMF	3um	Coaxial	FC/APC	X	X
	STLX-495-020m-PM-H8-T	20mW	PMF	3um	8-Pin	FC/APC	O	V
	STLP-495-020m	20mW	SMF-28	9um	Coaxial	FC/PC	X	X
STLX-495-020m-H8-T	20mW	SMF-28	9um	8-Pin	FC/PC	O	V	
505nm	STLP-505-010m	10mW	SMF	3um	Coaxial	FC/PC	X	X
	STLX-505-010m-H8-T	10mW	SMF	3um	8-Pin	FC/PC	O	V
	STLP-505-020m	20mW	SMF	3um	Coaxial	FC/PC	X	X
	STLX-505-020m-H8-T	20mW	SMF	3um	8-Pin	FC/PC	O	V
	STLP-505-010m-PM	10mW	PMF	3um	Coaxial	FC/APC	X	X
	STLX-505-010m-PM-H8-T	10mW	PMF	3um	8-Pin	FC/APC	O	V
	STLP-505-020m-PM	20mW	PMF	3um	Coaxial	FC/APC	X	X
	STLX-505-020m-PM-H8-T	20mW	PMF	3um	8-Pin	FC/APC	O	V
	STLP-505-020m	20mW	SMF-28	9um	Coaxial	FC/PC	X	X
STLX-505-020m-H8-T	20mW	SMF-28	9um	8-Pin	FC/PC	O	V	
510nm	STLP-510-010m	10mW	SMF	3um	Coaxial	FC/PC	X	X
	STLX-510-010m-H8-T	10mW	SMF	3um	8-Pin	FC/PC	O	V
	STLP-510-020m	20mW	SMF	3um	Coaxial	FC/PC	X	X
	STLX-510-020m-H8-T	20mW	SMF	3um	8-Pin	FC/PC	O	V
	STLP-510-010m-PM	10mW	PMF	3um	Coaxial	FC/APC	X	X
	STLX-510-010m-PM-H8-T	10mW	PMF	3um	8-Pin	FC/APC	O	V
	STLP-510-020m-PM	20mW	PMF	3um	Coaxial	FC/APC	X	X
	STLX-510-020m-PM-H8-T	20mW	PMF	3um	8-Pin	FC/APC	O	V
520nm	STLP-520-002m-PD	2mW	SMF	3um	Coaxial	FC/PC	V	X
	STLX-520-002m-H8-T-PD	2mW	SMF	3um	8-Pin	FC/PC	V	V
	STLP-520-005m-PD	5mW	SMF	3um	Coaxial	FC/PC	V	X
	STLX-520-005m-H8-T-PD	5mW	SMF	3um	8-Pin	FC/PC	V	V
	STLP-520-010m-PD	10mW	SMF	3um	Coaxial	FC/PC	V	X
	STLX-520-010m-H8-T-PD	10mW	SMF	3um	8-Pin	FC/PC	V	V
	STLP-520-020m-PD	20mW	SMF	3um	Coaxial	FC/PC	V	X
	STLX-520-020m-H8-T-PD	20mW	SMF	3um	8-Pin	FC/PC	V	V
	STLP-520-030m	30mW	SMF	3um	Coaxial	FC/PC	O	X
	STLX-520-030m-H8-T	30mW	SMF	3um	8-Pin	FC/PC	O	V
	STLP-520-030m-PD	30mW	SMF	3um	Coaxial	FC/PC	V	X
	STLX-520-030m-H8-T-PD	30mW	SMF	3um	8-Pin	FC/PC	V	V
	STLP-520-040m	40mW	SMF	3um	Coaxial	FC/PC	O	X
	STLX-520-040m-H8-T	40mW	SMF	3um	8-Pin	FC/PC	O	V
	STLP-520-050m	50mW	SMF	3um	Coaxial	FC/PC	O	X
STLX-520-050m-H8-T	50mW	SMF	3um	8-Pin	FC/PC	O	V	

Note V – yes, N – No, O – Optional

Specifications

Wavelength	Part Number	Output Power	Fiber Type	Fiber Core	Package	Connector	PD	TEC
520nm	STLP-520-010m-PM-PD	10mW	PMF	3um	Coaxial	FC/APC	V	X
	STLX-520-010m-PM-H8-T-PD	10mW	PMF	3um	8-Pin	FC/APC	V	V
	STLP-520-020m-PM-PD	20mW	PMF	3um	Coaxial	FC/APC	V	X
	STLX-520-020m-PM-H8-T-PD	20mW	PMF	3um	8-Pin	FC/APC	V	V
	STLP-520-030m-PM	30mW	PMF	3um	Coaxial	FC/APC	O	X
	STLX-520-030m-PM-H8-T	30mW	PMF	3um	8-Pin	FC/APC	O	V
	STLP-520-030m-PM-PD	30mW	PMF	3um	Coaxial	FC/APC	V	X
	STLX-520-030m-PM-H8-T-PD	30mW	PMF	3um	8-Pin	FC/APC	V	V
	STLP-520-040m-PM	40mW	PMF	3um	Coaxial	FC/APC	O	X
	STLX-520-040m-PM-H8-T	40mW	PMF	3um	8-Pin	FC/APC	O	V
	STLP-520-050m-PM	50mW	PMF	3um	Coaxial	FC/APC	O	X
	STLX-520-050m-PM-H8-T	50mW	PMF	3um	8-Pin	FC/APC	O	V
	STLP-520-030m-PD	30mW	SMF-28	9um	Coaxial	FC/PC	V	X
	STLX-520-030m-H8-T-PD	30mW	SMF-28	9um	8-Pin	FC/PC	V	V
	STLP-520-050m	50mW	SMF-28	9um	Coaxial	FC/PC	V	X
	STLX-520-050m-H8-T	50mW	SMF-28	9um	8-Pin	FC/PC	O	V
	STLP-520-080m	80mW	SMF-28	9um	Coaxial	FC/PC	V	X
	STLX-520-080m-H8-T	80mW	SMF-28	9um	8-Pin	FC/PC	O	V
633nm	STLP-633-030m	30mW	SMF	4um	Coaxial	FC/PC	X	X
	STLX-633-030m-H8-T	30mW	SMF	4um	8-Pin	FC/PC	O	V
	STLP-633-050m	50mW	SMF	4um	Coaxial	FC/PC	X	X
	STLX-633-050m-H8-T	50mW	SMF	4um	8-Pin	FC/PC	O	V
	STLP-633-030m-PM	30mW	PMF	4um	Coaxial	FC/APC	X	X
	STLX-633-030m-PM-H8-T	30mW	PMF	4um	8-Pin	FC/APC	O	V
	STLP-633-050m-PM	50mW	PMF	4um	Coaxial	FC/APC	X	X
	STLX-633-050m-PM-H8-T	50mW	PMF	4um	8-Pin	FC/APC	O	V
635nm	STLP-635-001m-PD	1mW	SMF	4um	Coaxial	FC/PC	V	X
	STLX-635-001m-H8-T-PD	1mW	SMF	4um	8-Pin	FC/PC	V	V
	STLP-635-003m-PD	3mW	SMF	4um	Coaxial	FC/PC	V	X
	STLX-635-003m-H8-T-PD	3mW	SMF	4um	8-Pin	FC/PC	V	V
	STLP-635-005m-PD	5mW	SMF	4um	Coaxial	FC/PC	V	X
	STLX-635-005m-H8-T-PD	5mW	SMF	4um	8-Pin	FC/PC	V	V
	STLP-635-010m-PD	10mW	SMF	4um	Coaxial	FC/PC	V	X
	STLX-635-010m-H8-T-PD	10mW	SMF	4um	8-Pin	FC/PC	V	V
	STLP-635-030m-PD	30mW	SMF	4um	Coaxial	FC/PC	V	X
	STLX-635-030m-H8-T-PD	30mW	SMF	4um	8-Pin	FC/PC	V	V
	STLP-635-050m-PD	50mW	SMF	4um	Coaxial	FC/PC	V	X
	STLX-635-050m-H8-T-PD	50mW	SMF	4um	8-Pin	FC/PC	V	V
	STLP-635-080m-PD	80mW	SMF	4um	Coaxial	FC/PC	V	X
	STLX-635-080m-H8-T-PD	80mW	SMF	4um	8-Pin	FC/PC	V	V
	STLP-635-100m-PD	100mW	SMF	4um	Coaxial	FC/PC	V	X
	STLX-635-100m-H8-T-PD	100mW	SMF	4um	8-Pin	FC/PC	V	V

Note V – yes, N – No, O – Optional

Specifications

Wavelength	Part Number	Output Power	Fiber Type	Fiber Core	Package	Connector	PD	TEC	
635nm	STLP-635-010m-PM-PD	10mW	PMF	4um	Coaxial	FC/APC	V	X	
	STLX-635-010m-PM-H8-T-PD	10mW	PMF	4um	8-Pin	FC/APC	V	V	
	STLP-635-030m-PM-PD	30mW	PMF	4um	Coaxial	FC/APC	V	X	
	STLX-635-030m-PM-H8-T-PD	30mW	PMF	4um	8-Pin	FC/APC	V	V	
	STLP-635-050m-PM-PD	50mW	PMF	4um	Coaxial	FC/APC	V	X	
	STLX-635-050m-PM-H8-T-PD	50mW	PMF	4um	8-Pin	FC/APC	V	V	
	STLP-635-080m-PM-PD	80mW	PMF	4um	Coaxial	FC/APC	V	X	
	STLX-635-080m-PM-H8-T-PD	80mW	PMF	4um	8-Pin	FC/APC	V	V	
	STLP-635-100m-PM-PD	100mW	PMF	4um	Coaxial	FC/APC	V	X	
	STLX-635-100m-PM-H8-T-PD	100mW	PMF	4um	8-Pin	FC/APC	V	V	
	STLP-635-010m-PD	10mW	SMF-28	9um	Coaxial	FC/PC	V	X	
	STLP-635-050m	50mW	SMF-28	9um	Coaxial	FC/PC	X	X	
	STLP-635-080m	80mW	SMF-28	9um	Coaxial	FC/PC	X	X	
	STLP-635-100m	100mW	SMF-28	9um	Coaxial	FC/PC	X	X	
	660nm	STLP-660-003m-PD	3mW	SMF	4um	Coaxial	FC/PC	V	X
		STLX-660-003m-H8-T-PD	3mW	SMF	4um	8-Pin	FC/PC	V	V
STLP-660-005m-PD		5mW	SMF	4um	Coaxial	FC/PC	V	X	
STLX-660-005m-H8-T-PD		5mW	SMF	4um	8-Pin	FC/PC	V	V	
STLP-660-010m-PD		10mW	SMF	4um	Coaxial	FC/PC	V	X	
STLX-660-010m-H8-T-PD		10mW	SMF	4um	8-Pin	FC/PC	V	V	
STLP-660-020m		20mW	SMF	4um	Coaxial	FC/PC	X	X	
STLX-660-020m-H8-T		20mW	SMF	4um	8-Pin	FC/PC	O	V	
STLP-660-030m-PD		30mW	SMF	4um	Coaxial	FC/PC	V	X	
STLX-660-030m-H8-T-PD		30mW	SMF	4um	8-Pin	FC/PC	V	V	
STLP-660-050m		50mW	SMF	4um	Coaxial	FC/PC	X	X	
STLX-660-050m-H8-T		50mW	SMF	4um	8-Pin	FC/PC	O	V	
STLX-660-050m-H8-T-PD		50mW	SMF	4um	8-Pin	FC/PC	V	V	
STLP-660-080m		80mW	SMF	4um	Coaxial	FC/PC	X	X	
STLX-660-080m-H8-T		80mW	SMF	4um	8-Pin	FC/PC	O	V	
STLP-660-100m		100mW	SMF	4um	Coaxial	FC/PC	X	X	
STLX-660-100m-H8-T		100mW	SMF	4um	8-Pin	FC/PC	O	V	
STLP-660-010m-PM-PD		10mW	PMF	4um	Coaxial	FC/APC	V	X	
STLX-660-010m-PM-H8-T-PD		10mW	PMF	4um	8-Pin	FC/APC	V	V	
STLP-660-030m-PM-PD		30mW	PMF	4um	Coaxial	FC/APC	V	X	
STLX-660-030m-PM-H8-T-PD		30mW	PMF	4um	8-Pin	FC/APC	V	V	
STLP-660-050m-PM		50mW	PMF	4um	Coaxial	FC/APC	X	X	
STLX-660-050m-PM-H8-T		50mW	PMF	4um	8-Pin	FC/APC	O	V	
STLX-660-050m-PM-H8-T-PD		50mW	PMF	4um	8-Pin	FC/APC	V	V	
STLP-660-080m-PM		80mW	PMF	4um	Coaxial	FC/APC	X	X	
STLX-660-080m-PM-H8-T		80mW	PMF	4um	8-Pin	FC/APC	O	V	
STLP-660-100m-PM		100mW	PMF	4um	Coaxial	FC/APC	X	X	
STLX-660-100m-PM-H8-T		100mW	PMF	4um	8-Pin	FC/APC	O	V	
STLP-660-020m		20mW	SMF-28	9um	Coaxial	FC/PC	X	X	
STLP-660-040m		40mW	SMF-28	9um	Coaxial	FC/PC	X	X	
STLP-660-050m		50mW	SMF-28	9um	Coaxial	FC/PC	X	X	
STLP-660-080m		80mW	SMF-28	9um	Coaxial	FC/PC	X	X	
STLP-660-100m		100mW	SMF-28	9um	Coaxial	FC/PC	X	X	

Note V – yes, N – No, O – Optional

Specifications

Wavelength	Part Number	Output Power	Fiber Type	Fiber Core	Package	Connector	PD	TEC
670nm	STLP-670-003m-PD	3mW	SMF	4um	Coaxial	FC/PC	V	X
	STLX-670-003m-H8-T-PD	3mW	SMF	4um	8-Pin	FC/PC	V	V
	STLP-670-005m-PD	5mW	SMF	4um	Coaxial	FC/PC	V	X
	STLX-670-005m-H8-T-PD	5mW	SMF	4um	8-Pin	FC/PC	V	V
	STLP-670-050m	50mW	SMF	4um	Coaxial	FC/PC	X	X
	STLX-670-050m-H8-T	50mW	SMF	4um	8-Pin	FC/PC	O	V
	STLP-670-003m-PM-PD	3mW	PMF	4um	Coaxial	FC/APC	V	X
	STLX-670-003m-PM-H8-T-PD	3mW	PMF	4um	8-Pin	FC/APC	V	V
	STLP-670-005m-PM-PD	5mW	PMF	4um	Coaxial	FC/APC	V	X
	STLX-670-005m-PM-H8-T-PD	5mW	PMF	4um	8-Pin	FC/APC	V	V
	STLP-670-050m-PM	50mW	PMF	4um	Coaxial	FC/APC	X	X
	STLX-670-050m-PM-H8-T	50mW	PMF	4um	8-Pin	FC/APC	O	V
	STLP-670-005m-PD	5mW	SMF-28	9um	Coaxial	FC/PC	V	X
685nm	STLP-685-010m-PD	10mW	SMF	4um	Coaxial	FC/PC	V	X
	STLX-685-010m-H8-T-PD	10mW	SMF	4um	8-Pin	FC/PC	V	V
	STLP-685-015m-PD	15mW	SMF	4um	Coaxial	FC/PC	V	X
	STLX-685-015m-H8-T-PD	15mW	SMF	4um	8-Pin	FC/PC	V	V
	STLP-685-020m-PD	20mW	SMF	4um	Coaxial	FC/PC	V	X
	STLX-685-020m-H8-T-PD	20mW	SMF	4um	8-Pin	FC/PC	V	V
	STLP-685-010m-PM-PD	10mW	PMF	4um	Coaxial	FC/APC	V	X
	STLX-685-010m-PM-H8-T-PD	10mW	PMF	4um	8-Pin	FC/APC	V	V
	STLP-685-015m-PM-PD	15mW	PMF	4um	Coaxial	FC/APC	V	X
	STLX-685-015m-PM-H8-T-PD	15mW	PMF	4um	8-Pin	FC/APC	V	V
	STLP-685-015m-PD	15mW	SMF-28	9um	Coaxial	FC/PC	V	X
705nm	STLP-705-010m-PD	10mW	SMF	4um	Coaxial	FC/PC	V	X
	STLX-705-010m-H8-T-PD	10mW	SMF	4um	8-Pin	FC/PC	V	V
	STLP-705-015m-PD	15mW	SMF	4um	Coaxial	FC/PC	V	X
	STLX-705-015m-H8-T-PD	15mW	SMF	4um	8-Pin	FC/PC	V	V
	STLP-705-010m-PM-PD	10mW	PMF	4um	Coaxial	FC/APC	V	X
	STLX-705-010m-PM-H8-T-PD	10mW	PMF	4um	8-Pin	FC/APC	V	V
	STLP-705-015m-PM-PD	15mW	PMF	4um	Coaxial	FC/APC	V	X
	STLX-705-015m-PM-H8-T-PD	15mW	PMF	4um	8-Pin	FC/APC	V	V
730nm	STLP-730-010m-PD	10mW	SMF	4um	Coaxial	FC/PC	V	X
	STLX-730-010m-H8-T-PD	10mW	SMF	4um	8-Pin	FC/PC	V	V
	STLP-730-015m-PD	15mW	SMF	4um	Coaxial	FC/PC	V	X
	STLX-730-015m-H8-T-PD	15mW	SMF	4um	8-Pin	FC/PC	V	V
	STLP-730-010m-PM-PD	10mW	PMF	4um	Coaxial	FC/APC	V	X
	STLX-730-010m-PM-H8-T-PD	10mW	PMF	4um	8-Pin	FC/APC	V	V
	STLP-730-015m-PM-PD	15mW	PMF	4um	Coaxial	FC/APC	V	X
	STLX-730-015m-PM-H8-T-PD	15mW	PMF	4um	8-Pin	FC/APC	V	V

Note V – yes, N – No, O – Optional

Specifications

Wavelength	Part Number	Output Power	Fiber Type	Fiber Core	Package	Connector	PD	TEC
785nm	STLP-785-005m-PD	5mW	SMF	5um	Coaxial	FC/PC	V	X
	STLX-785-005m-H8-T-PD	5mW	SMF	5um	8-Pin	FC/PC	V	V
	STLP-785-030m-PD	30mW	SMF	5um	Coaxial	FC/PC	V	X
	STLX-785-030m-H8-T-PD	30mW	SMF	5um	8-Pin	FC/PC	V	V
	STLP-785-040m-PD	40mW	SMF	5um	Coaxial	FC/PC	V	X
	STLX-785-040m-H8-T-PD	40mW	SMF	5um	8-Pin	FC/PC	V	V
	STLP-785-050m-PD	50mW	SMF	5um	Coaxial	FC/PC	V	X
	STLX-785-050m-H8-T-PD	50mW	SMF	5um	8-Pin	FC/PC	V	V
	STLP-785-020m-PM-PD	20mW	PMF	5um	Coaxial	FC/APC	V	X
	STLX-785-020m-PM-H8-T-PD	20mW	PMF	5um	8-Pin	FC/APC	V	V
	STLP-785-030m-PM-PD	30mW	PMF	5um	Coaxial	FC/APC	V	X
	STLX-785-030m-PM-H8-T-PD	30mW	PMF	5um	8-Pin	FC/APC	V	V
	STLP-785-040m-PM-PD	40mW	PMF	5um	Coaxial	FC/APC	V	X
	STLX-785-040m-PM-H8-T-PD	40mW	PMF	5um	8-Pin	FC/APC	V	V
STLP-785-030m-PD	30mW	SMF-28	9um	Coaxial	FC/PC	V	X	
808nm	STLP-808-020m-PD	20mW	SMF	5um	Coaxial	FC/PC	V	X
	STLX-808-020m-H-T-PD	20mW	SMF	5um	HHL-01	FC/PC	V	V
	STLP-808-030m-PD	30mW	SMF	5um	Coaxial	FC/PC	V	X
	STLX-808-030m-H-T-PD	30mW	SMF	5um	HHL-01	FC/PC	V	V
	STLP-808-040m-PD	40mW	SMF	5um	Coaxial	FC/PC	V	X
	STLX-808-040m-H-T-PD	40mW	SMF	5um	HHL-01	FC/PC	V	V
	STLP-808-050m-PD	50mW	SMF	5um	Coaxial	FC/PC	V	X
	STLX-808-050m-H-T-PD	50mW	SMF	5um	HHL-01	FC/PC	V	V
	STLP-808-015m-PM-PD	15mW	PMF	5um	Coaxial	FC/APC	V	X
	STLX-808-015m-PM-H-T-PD	15mW	PMF	5um	HHL-01	FC/APC	V	V
	STLP-808-030m-PM-PD	30mW	PMF	5um	Coaxial	FC/APC	V	X
	STLX-808-030m-PM-H-T-PD	30mW	PMF	5um	HHL-01	FC/APC	V	V
	STLP-808-040m-PM-PD	40mW	PMF	5um	Coaxial	FC/APC	V	X
	STLX-808-040m-PM-H-T-PD	40mW	PMF	5um	HHL-01	FC/APC	V	V
820nm	STLP-820-030m-PD	30mW	SMF	5um	Coaxial	FC/PC	V	X
	STLX-820-030m-H8-T-PD	30mW	SMF	5um	8-Pin	FC/PC	V	V
	STLP-820-050m-PD	50mW	SMF	5um	Coaxial	FC/PC	V	X
	STLX-820-050m-H8-T-PD	50mW	SMF	5um	8-Pin	FC/PC	V	V
	STLP-820-030m-PM-PD	30mW	PMF	5um	Coaxial	FC/APC	V	X
	STLX-820-030m-PM-H8-T-PD	30mW	PMF	5um	8-Pin	FC/APC	V	V
	STLP-820-050m-PM-PD	50mW	PMF	5um	Coaxial	FC/APC	V	X
	STLX-820-050m-PM-H8-T-PD	50mW	PMF	5um	8-Pin	FC/APC	V	V
830nm	STLP-830-005m-PD	5mW	SMF	5um	Coaxial	FC/PC	V	X
	STLX-830-005m-H8-T-PD	5mW	SMF	5um	8-Pin	FC/PC	V	V
	STLP-830-030m-PD	30mW	SMF	5um	Coaxial	FC/PC	V	X
	STLX-830-030m-H8-T-PD	30mW	SMF	5um	8-Pin	FC/PC	V	V
	STLP-830-050m-PD	50mW	SMF	5um	Coaxial	FC/PC	V	X
	STLX-830-050m-H8-T-PD	50mW	SMF	5um	8-Pin	FC/PC	V	V
	STLP-830-080m-PD	80mW	SMF	5um	Coaxial	FC/PC	V	X
	STLX-830-080m-H8-T-PD	80mW	SMF	5um	8-Pin	FC/PC	V	V
	STLP-830-100m-PD	100mW	SMF	5um	Coaxial	FC/PC	V	X
	STLX-830-100m-H8-T-PD	100mW	SMF	5um	8-Pin	FC/PC	V	V

Note V – yes, N – No, O – Optional

Specifications

Wavelength	Part Number	Output Power	Fiber Type	Fiber Core	Package	Connector	PD	TEC
830nm	STLP-830-030m-PM-PD	30mW	PMF	5um	Coaxial	FC/APC	V	X
	STLX-830-030m-PM-H8-T-PD	30mW	PMF	5um	8-Pin	FC/APC	V	V
	STLP-830-050m-PM-PD	50mW	PMF	5um	Coaxial	FC/APC	V	X
	STLX-830-050m-PM-H8-T-PD	50mW	PMF	5um	8-Pin	FC/APC	V	V
	STLP-830-080m-PM-PD	80mW	PMF	5um	Coaxial	FC/APC	V	X
	STLX-830-080m-PM-H8-T-PD	80mW	PMF	5um	8-Pin	FC/APC	V	V
	STLP-830-100m-PM-PD	100mW	PMF	5um	Coaxial	FC/APC	V	X
	STLX-830-100m-PM-H8-T-PD	100mW	PMF	5um	8-Pin	FC/APC	V	V
	STLP-830-050m-PD	50mW	SMF-28	9um	Coaxial	FC/PC	V	X
	STLP-830-100m-PD	100mW	SMF-28	9um	Coaxial	FC/PC	V	X
850nm	STLP-850-002m-PD	2mW	SMF	5um	Coaxial	FC/PC	V	X
	STLX-850-002m-H8-T-PD	2mW	SMF	5um	8-Pin	FC/PC	V	V
	STLP-850-010m-PD	10mW	SMF	5um	Coaxial	FC/PC	V	X
	STLX-850-010m-H8-T-PD	10mW	SMF	5um	8-Pin	FC/PC	V	V
	STLP-850-030m-PD	30mW	SMF	5um	Coaxial	FC/PC	V	X
	STLX-850-030m-H8-T-PD	30mW	SMF	5um	8-Pin	FC/PC	V	V
	STLP-850-050m-PD	50mW	SMF	5um	Coaxial	FC/PC	V	X
	STLX-850-050m-H8-T-PD	50mW	SMF	5um	8-Pin	FC/PC	V	V
	STLP-850-070m-PD	70mW	SMF	5um	Coaxial	FC/PC	V	X
	STLX-850-070m-H8-T-PD	70mW	SMF	5um	8-Pin	FC/PC	V	V
	STLP-850-030m-PM-PD	30mW	PMF	5um	Coaxial	FC/APC	V	X
	STLX-850-030m-PM-H8-T-PD	30mW	PMF	5um	8-Pin	FC/APC	V	V
	STLP-850-050m-PM-PD	50mW	PMF	5um	Coaxial	FC/APC	V	X
	STLX-850-050m-PM-H8-T-PD	50mW	PMF	5um	8-Pin	FC/APC	V	V
	STLP-850-070m-PM-PD	70mW	PMF	5um	Coaxial	FC/APC	V	X
	STLX-850-070m-PM-H8-T-PD	70mW	PMF	5um	8-Pin	FC/APC	V	V
	STLP-850-002m-PD	2mW	SMF-28	9um	Coaxial	FC/PC	V	X
	STLP-850-020m-PD	20mW	SMF-28	9um	Coaxial	FC/PC	V	X
	STLP-850-050m-PD	50mW	SMF-28	9um	Coaxial	FC/PC	V	X
	880nm	STLP-880-001m-PD	1mW	SMF	5um	Coaxial	FC/PC	V
STLX-880-001m-H8-T-PD		1mW	SMF	5um	8-Pin	FC/PC	V	V
STLP-880-001m-PM-PD		1mW	PMF	5um	Coaxial	FC/APC	V	X
STLX-880-001m-PM-H8-T-PD		1mW	PMF	5um	8-Pin	FC/APC	V	V
STLP-880-002m-PD		2mW	SMF-28	9um	Coaxial	FC/PC	V	X
905nm	STLP-905-002m-PD	2mW	SMF	5um	Coaxial	FC/PC	V	X
	STLX-905-002m-H8-T-PD	2mW	SMF	5um	8-Pin	FC/PC	V	V
	STLP-905-030m-PD	30mW	SMF	5um	Coaxial	FC/PC	V	X
	STLX-905-030m-H8-T-PD	30mW	SMF	5um	8-Pin	FC/PC	V	V
	STLP-905-050m-PD	50mW	SMF	5um	Coaxial	FC/PC	V	X
	STLX-905-050m-H8-T-PD	50mW	SMF	5um	8-Pin	FC/PC	V	V
	STLP-905-070m-PD	70mW	SMF	5um	Coaxial	FC/PC	V	X
	STLX-905-070m-H8-T-PD	70mW	SMF	5um	8-Pin	FC/PC	V	V

Note V – yes, N – No, O – Optional

Specifications

Wavelength	Part Number	Output Power	Fiber Type	Fiber Core	Package	Connector	PD	TEC
905nm	STLP-905-030m-PM-PD	30mW	PMF	5um	Coaxial	FC/APC	V	X
	STLX-905-030m-PM-H8-T-PD	30mW	PMF	5um	8-Pin	FC/APC	V	V
	STLP-905-050m-PM-PD	50mW	PMF	5um	Coaxial	FC/APC	V	X
	STLX-905-050m-PM-H8-T-PD	50mW	PMF	5um	8-Pin	FC/APC	V	V
	STLP-905-070m-PM-PD	70mW	PMF	5um	Coaxial	FC/APC	V	X
	STLX-905-070m-PM-H8-T-PD	70mW	PMF	5um	8-Pin	FC/APC	V	V
	STLP-905-050m-PD	50mW	SMF-28	9um	Coaxial	FC/PC	V	X
	STLP-905-080m-PD	80mW	SMF-28	9um	Coaxial	FC/PC	V	X
940nm	STLP-940-030m-PD	30mW	SMF	5um	Coaxial	FC/PC	V	X
	STLX-940-030m-H8-T-PD	30mW	SMF	5um	8-Pin	FC/PC	V	V
	STLP-940-050m-PD	50mW	SMF	5um	Coaxial	FC/PC	V	X
	STLX-940-050m-H8-T-PD	50mW	SMF	5um	8-Pin	FC/PC	V	V
	STLP-940-080m-PD	80mW	SMF	5um	Coaxial	FC/PC	V	X
	STLX-940-080m-H8-T-PD	80mW	SMF	5um	8-Pin	FC/PC	V	V
	STLP-940-100m-PD	100mW	SMF	5um	Coaxial	FC/PC	V	X
	STLX-940-100m-H8-T-PD	100mW	SMF	5um	8-Pin	FC/PC	V	V
	STLP-940-030m-PM-PD	30mW	PMF	5um	Coaxial	FC/APC	V	X
	STLX-940-030m-PM-H8-T-PD	30mW	PMF	5um	8-Pin	FC/APC	V	V
	STLP-940-050m-PM-PD	50mW	PMF	5um	Coaxial	FC/APC	V	X
	STLX-940-050m-PM-H8-T-PD	50mW	PMF	5um	8-Pin	FC/APC	V	V
	STLP-940-080m-PM-PD	80mW	PMF	5um	Coaxial	FC/APC	V	X
	STLX-940-080m-PM-H8-T-PD	80mW	PMF	5um	8-Pin	FC/APC	V	V
	STLP-940-100m-PM-PD	100mW	PMF	5um	Coaxial	FC/APC	V	X
	STLX-940-100m-PM-H8-T-PD	100mW	PMF	5um	8-Pin	FC/APC	V	V
	STLP-940-050m-PD	50mW	SMF-28	9um	Coaxial	FC/PC	V	X
	STLP-940-100m-PD	100mW	SMF-28	9um	Coaxial	FC/PC	V	X
980nm	STLP-980-005m-PD	5mW	SMF	6um	Coaxial	FC/PC	V	X
	STLX-980-005m-H8-T-PD	5mW	SMF	6um	8-Pin	FC/PC	V	V
	STLP-980-010m-PD	10mW	SMF	6um	Coaxial	FC/PC	V	X
	STLX-980-010m-H8-T-PD	10mW	SMF	6um	8-Pin	FC/PC	V	V
	STLP-980-010m-PD	10mW	SMF-28	9um	Coaxial	FC/PC	V	X
	STLP-980-015m-PD	15mW	SMF-28	9um	Coaxial	FC/PC	V	X
1064nm	STLP-1064-010m-PD	10mW	SMF	6um	Coaxial	FC/PC	V	X
	STLP-1064-015m-PD	15mW	SMF	6um	Coaxial	FC/PC	V	X
	STLP-1064-030m-PD	30mW	SMF	6um	Coaxial	FC/PC	V	X
	STLP-1064-050m-PD	50mW	SMF	6um	Coaxial	FC/PC	V	X
	STLP-1064-005m-PM-PD	5mW	PMF	6um	Coaxial	FC/APC	V	X
	STLP-1064-010m-PM-PD	10mW	PMF	6um	Coaxial	FC/APC	V	X
	STLP-1064-020m-PM-PD	20mW	PMF	6um	Coaxial	FC/APC	V	X
	STLP-1064-040m-PM-PD	40mW	PMF	6um	Coaxial	FC/APC	V	X
	STLP-1064-010m-PD	10mW	SMF-28	9um	Coaxial	FC/PC	V	X
	STLP-1064-020m-PD	20mW	SMF-28	9um	Coaxial	FC/PC	V	X
STLP-1064-050m-PD	50mW	SMF-28	9um	Coaxial	FC/PC	V	X	

Note V – yes, N – No, O – Optional

Specifications

Wavelength	Part Number	Output Power	Fiber Type	Fiber Core	Package	Connector	PD	TEC
1270nm	STLP-1270-002m-DFB	2mW	SMF-28	9um	Coaxial	FC/PC	V	X
	STLP-1270-005m-DFB	5mW	SMF-28	9um	Coaxial	FC/PC	V	X
	STLP-1270-005m-T-DFB	5mW	SMF-28	9um	Coaxial	FC/PC	V	V
	STLX-1270-005m-H8-T-DFB	5mW	SMF-28	9um	8-Pin	FC/PC	V	V
	STLP-1270-010m-DFB	10mW	SMF-28	9um	Coaxial	FC/PC	V	X
	STLX-1270-010m-H8-T-DFB	10mW	SMF-28	9um	8-Pin	FC/PC	V	V
	STLP-1270-005m-PM-DFB	5mW	PMF	9um	Coaxial	FC/APC	V	X
	STLP-1270-005m-PM-T-DFB	5mW	PMF	9um	Coaxial	FC/APC	V	V
	STLX-1270-005m-PM-H8-T-DFB	5mW	PMF	9um	8-Pin	FC/APC	V	V
	STLP-1270-010m-PM-DFB	10mW	PMF	9um	Coaxial	FC/APC	V	X
STLX-1270-010m-PM-H8-T-DFB	10mW	PMF	9um	8-Pin	FC/APC	V	V	
1290nm	STLP-1290-002m-DFB	2mW	SMF-28	9um	Coaxial	FC/PC	V	X
	STLP-1290-005m-DFB	5mW	SMF-28	9um	Coaxial	FC/PC	V	X
	STLP-1290-005m-T-DFB	5mW	SMF-28	9um	Coaxial	FC/PC	V	V
	STLX-1290-005m-H8-T-DFB	5mW	SMF-28	9um	8-Pin	FC/PC	V	V
	STLP-1290-010m-DFB	10mW	SMF-28	9um	Coaxial	FC/PC	V	X
	STLX-1290-010m-H8-T-DFB	10mW	SMF-28	9um	8-Pin	FC/PC	V	V
	STLP-1290-005m-PM-DFB	5mW	PMF	9um	Coaxial	FC/APC	V	X
	STLP-1290-005m-PM-T-DFB	5mW	PMF	9um	Coaxial	FC/APC	V	V
	STLX-1290-005m-PM-H8-T-DFB	5mW	PMF	9um	8-Pin	FC/APC	V	V
	STLP-1290-010m-PM-DFB	10mW	PMF	9um	Coaxial	FC/APC	V	X
STLX-1290-010m-PM-H8-T-DFB	10mW	PMF	9um	8-Pin	FC/APC	V	V	
1310nm	STLP-1310-002m-FP	2mW	SMF-28	9um	Coaxial	FC/PC	V	X
	STLP-1310-003m-DFB	3mW	SMF-28	9um	Coaxial	FC/PC	V	X
	STLP-1310-005m-DFB	5mW	SMF-28	9um	Coaxial	FC/PC	V	X
	STLX-1310-005m-H8-T-DFB	5mW	SMF-28	9um	8-Pin	FC/PC	V	V
	STLP-1310-010m-DFB	10mW	SMF-28	9um	Coaxial	FC/PC	V	X
	STLP-1310-010m-T-DFB	10mW	SMF-28	9um	Coaxial	FC/PC	V	V
	STLX-1310-010m-H8-T-DFB	10mW	SMF-28	9um	8-Pin	FC/PC	V	V
	STLP-1310-015m-DFB	15mW	SMF-28	9um	Coaxial	FC/PC	V	X
	STLX-1310-015m-H8-T-DFB	15mW	SMF-28	9um	8-Pin	FC/PC	V	V
	STLP-1310-010m-PM-DFB	10mW	PMF	9um	Coaxial	FC/APC	V	X
	STLP-1310-010m-PM-T-DFB	10mW	PMF	9um	Coaxial	FC/APC	V	V
	STLX-1310-010m-PM-H8-T-DFB	10mW	PMF	9um	8-Pin	FC/APC	V	V
	STLP-1310-015m-PM-DFB	15mW	PMF	9um	Coaxial	FC/APC	V	X
	STLX-1310-015m-PM-H8-T-DFB	15mW	PMF	9um	8-Pin	FC/APC	V	V
1330nm	STLP-1330-002m-DFB	2mW	SMF-28	9um	Coaxial	FC/PC	V	X
	STLP-1330-005m-DFB	5mW	SMF-28	9um	Coaxial	FC/PC	V	X
	STLP-1330-005m-T-DFB	5mW	SMF-28	9um	Coaxial	FC/PC	V	V
	STLX-1330-005m-H8-T-DFB	5mW	SMF-28	9um	8-Pin	FC/PC	V	V
	STLP-1330-010m-DFB	10mW	SMF-28	9um	Coaxial	FC/PC	V	X
	STLX-1330-010m-H8-T-DFB	10mW	SMF-28	9um	8-Pin	FC/PC	V	V
	STLP-1330-005m-PM-DFB	5mW	PMF	9um	Coaxial	FC/APC	V	X
	STLP-1330-005m-PM-T-DFB	5mW	PMF	9um	Coaxial	FC/APC	V	V
	STLX-1330-005m-PM-H8-T-DFB	5mW	PMF	9um	8-Pin	FC/APC	V	V
	STLP-1330-010m-PM-DFB	10mW	PMF	9um	Coaxial	FC/APC	V	X
	STLX-1330-010m-PM-H8-T-DFB	10mW	PMF	9um	8-Pin	FC/APC	V	V

Note V – yes, N – No, O – Optional

Specifications

Wavelength	Part Number	Output Power	Fiber Type	Fiber Core	Package	Connector	PD	TEC
1350nm	STLP-1350-002m-DFB	2mW	SMF-28	9um	Coaxial	FC/PC	V	X
	STLP-1350-005m-DFB	5mW	SMF-28	9um	Coaxial	FC/PC	V	X
	STLP-1350-005m-T-DFB	5mW	SMF-28	9um	Coaxial	FC/PC	V	V
	STLX-1350-005m-H8-T-DFB	5mW	SMF-28	9um	8-Pin	FC/PC	V	V
	STLP-1350-010m-DFB	10mW	SMF-28	9um	Coaxial	FC/PC	V	X
	STLX-1350-010m-H8-T-DFB	10mW	SMF-28	9um	8-Pin	FC/PC	V	V
	STLP-1350-005m-PM-DFB	5mW	PMF	9um	Coaxial	FC/APC	V	X
	STLP-1350-005m-PM-T-DFB	5mW	PMF	9um	Coaxial	FC/APC	V	V
	STLX-1350-005m-PM-H8-T-DFB	5mW	PMF	9um	8-Pin	FC/APC	V	V
	STLP-1350-010m-PM-DFB	10mW	PMF	9um	Coaxial	FC/APC	V	X
STLX-1350-010m-PM-H8-T-DFB	10mW	PMF	9um	8-Pin	FC/APC	V	V	
1370nm	STLP-1370-002m-DFB	2mW	SMF-28	9um	Coaxial	FC/PC	V	X
	STLP-1370-005m-DFB	5mW	SMF-28	9um	Coaxial	FC/PC	V	X
	STLP-1370-005m-T-DFB	5mW	SMF-28	9um	Coaxial	FC/PC	V	V
	STLX-1370-005m-H8-T-DFB	5mW	SMF-28	9um	8-Pin	FC/PC	V	V
	STLP-1370-010m-DFB	10mW	SMF-28	9um	Coaxial	FC/PC	V	X
	STLX-1370-010m-H8-T-DFB	10mW	SMF-28	9um	8-Pin	FC/PC	V	V
	STLP-1370-005m-PM-DFB	5mW	PMF	9um	Coaxial	FC/APC	V	X
	STLP-1370-005m-PM-T-DFB	5mW	PMF	9um	Coaxial	FC/APC	V	V
	STLX-1370-005m-PM-H8-T-DFB	5mW	PMF	9um	8-Pin	FC/APC	V	V
	STLP-1370-010m-PM-DFB	10mW	PMF	9um	Coaxial	FC/APC	V	X
STLX-1370-010m-PM-H8-T-DFB	10mW	PMF	9um	8-Pin	FC/APC	V	V	
1390nm	STLP-1390-002m-DFB	2mW	SMF-28	9um	Coaxial	FC/PC	V	X
	STLP-1390-005m-DFB	5mW	SMF-28	9um	Coaxial	FC/PC	V	X
	STLP-1390-005m-T-DFB	5mW	SMF-28	9um	Coaxial	FC/PC	V	V
	STLX-1390-005m-H8-T-DFB	5mW	SMF-28	9um	8-Pin	FC/PC	V	V
	STLP-1390-010m-DFB	10mW	SMF-28	9um	Coaxial	FC/PC	V	X
	STLX-1390-010m-H8-T-DFB	10mW	SMF-28	9um	8-Pin	FC/PC	V	V
	STLP-1390-005m-PM-DFB	5mW	PMF	9um	Coaxial	FC/APC	V	X
	STLP-1390-005m-PM-T-DFB	5mW	PMF	9um	Coaxial	FC/APC	V	V
	STLX-1390-005m-PM-H8-T-DFB	5mW	PMF	9um	8-Pin	FC/APC	V	V
	STLP-1390-010m-PM-DFB	10mW	PMF	9um	Coaxial	FC/APC	V	X
STLX-1390-010m-PM-H8-T-DFB	10mW	PMF	9um	8-Pin	FC/APC	V	V	
1410nm	STLP-1410-002m-DFB	2mW	SMF-28	9um	Coaxial	FC/PC	V	X
	STLP-1410-005m-DFB	5mW	SMF-28	9um	Coaxial	FC/PC	V	X
	STLP-1410-005m-T-DFB	5mW	SMF-28	9um	Coaxial	FC/PC	V	V
	STLX-1410-005m-H8-T-DFB	5mW	SMF-28	9um	8-Pin	FC/PC	V	V
	STLP-1410-010m-DFB	10mW	SMF-28	9um	Coaxial	FC/PC	V	X
	STLX-1410-010m-H8-T-DFB	10mW	SMF-28	9um	8-Pin	FC/PC	V	V
	STLP-1410-005m-PM-DFB	5mW	PMF	9um	Coaxial	FC/APC	V	X
	STLP-1410-005m-PM-T-DFB	5mW	PMF	9um	Coaxial	FC/APC	V	V
	STLX-1410-005m-PM-H8-T-DFB	5mW	PMF	9um	8-Pin	FC/APC	V	V
	STLP-1410-010m-PM-DFB	10mW	PMF	9um	Coaxial	FC/APC	V	X
STLX-1410-010m-PM-H8-T-DFB	10mW	PMF	9um	8-Pin	FC/APC	V	V	

Note V – yes, N – No, O – Optional

Specifications

Wavelength	Part Number	Output Power	Fiber Type	Fiber Core	Package	Connector	PD	TEC
1430nm	STLP-1430-002m-DFB	2mW	SMF-28	9um	Coaxial	FC/PC	V	X
	STLP-1430-005m-DFB	5mW	SMF-28	9um	Coaxial	FC/PC	V	X
	STLP-1430-005m-T-DFB	5mW	SMF-28	9um	Coaxial	FC/PC	V	V
	STLX-1430-005m-H8-T-DFB	5mW	SMF-28	9um	8-Pin	FC/PC	V	V
	STLP-1430-010m-DFB	10mW	SMF-28	9um	Coaxial	FC/PC	V	X
	STLX-1430-010m-H8-T-DFB	10mW	SMF-28	9um	8-Pin	FC/PC	V	V
	STLP-1430-005m-PM-DFB	5mW	PMF	9um	Coaxial	FC/APC	V	X
	STLP-1430-005m-PM-T-DFB	5mW	PMF	9um	Coaxial	FC/APC	V	V
	STLX-1430-005m-PM-H8-T-DFB	5mW	PMF	9um	8-Pin	FC/APC	V	V
	STLP-1430-010m-PM-DFB	10mW	PMF	9um	Coaxial	FC/APC	V	X
STLX-1430-010m-PM-H8-T-DFB	10mW	PMF	9um	8-Pin	FC/APC	V	V	
1450nm	STLP-1450-002m-DFB	2mW	SMF-28	9um	Coaxial	FC/PC	V	X
	STLP-1450-005m-DFB	5mW	SMF-28	9um	Coaxial	FC/PC	V	X
	STLP-1450-005m-T-DFB	5mW	SMF-28	9um	Coaxial	FC/PC	V	V
	STLX-1450-005m-H8-T-DFB	5mW	SMF-28	9um	8-Pin	FC/PC	V	V
	STLP-1450-010m-DFB	10mW	SMF-28	9um	Coaxial	FC/PC	V	X
	STLX-1450-010m-H8-T-DFB	10mW	SMF-28	9um	8-Pin	FC/PC	V	V
	STLP-1450-005m-PM-DFB	5mW	PMF	9um	Coaxial	FC/APC	V	X
	STLP-1450-005m-PM-T-DFB	5mW	PMF	9um	Coaxial	FC/APC	V	V
	STLX-1450-005m-PM-H8-T-DFB	5mW	PMF	9um	8-Pin	FC/APC	V	V
	STLP-1450-010m-PM-DFB	10mW	PMF	9um	Coaxial	FC/APC	V	X
STLX-1450-010m-PM-H8-T-DFB	10mW	PMF	9um	8-Pin	FC/APC	V	V	
1470nm	STLP-1470-002m-DFB	2mW	SMF-28	9um	Coaxial	FC/PC	V	X
	STLP-1470-005m-DFB	5mW	SMF-28	9um	Coaxial	FC/PC	V	X
	STLP-1470-005m-T-DFB	5mW	SMF-28	9um	Coaxial	FC/PC	V	V
	STLX-1470-005m-H8-T-DFB	5mW	SMF-28	9um	8-Pin	FC/PC	V	V
	STLP-1470-010m-DFB	10mW	SMF-28	9um	Coaxial	FC/PC	V	X
	STLX-1470-010m-H8-T-DFB	10mW	SMF-28	9um	8-Pin	FC/PC	V	V
	STLP-1470-005m-PM-DFB	5mW	PMF	9um	Coaxial	FC/APC	V	X
	STLP-1470-005m-PM-T-DFB	5mW	PMF	9um	Coaxial	FC/APC	V	V
	STLX-1470-005m-PM-H8-T-DFB	5mW	PMF	9um	8-Pin	FC/APC	V	V
	STLP-1470-010m-PM-DFB	10mW	PMF	9um	Coaxial	FC/APC	V	X
STLX-1470-010m-PM-H8-T-DFB	10mW	PMF	9um	8-Pin	FC/APC	V	V	
1490nm	STLP-1490-002m-DFB	2mW	SMF-28	9um	Coaxial	FC/PC	V	X
	STLP-1490-005m-DFB	5mW	SMF-28	9um	Coaxial	FC/PC	V	X
	STLP-1490-005m-T-DFB	5mW	SMF-28	9um	Coaxial	FC/PC	V	V
	STLX-1490-005m-H8-T-DFB	5mW	SMF-28	9um	8-Pin	FC/PC	V	V
	STLP-1490-010m-DFB	10mW	SMF-28	9um	Coaxial	FC/PC	V	X
	STLX-1490-010m-H8-T-DFB	10mW	SMF-28	9um	8-Pin	FC/PC	V	V
	STLP-1490-005m-PM-DFB	5mW	PMF	9um	Coaxial	FC/APC	V	X
	STLP-1490-005m-PM-T-DFB	5mW	PMF	9um	Coaxial	FC/APC	V	V
	STLX-1490-005m-PM-H8-T-DFB	5mW	PMF	9um	8-Pin	FC/APC	V	V
	STLP-1490-010m-PM-DFB	10mW	PMF	9um	Coaxial	FC/APC	V	X
STLX-1490-010m-PM-H8-T-DFB	10mW	PMF	9um	8-Pin	FC/APC	V	V	

Note V – yes, N – No, O – Optional

Specifications

Wavelength	Part Number	Output Power	Fiber Type	Fiber Core	Package	Connector	PD	TEC
1510nm	STLP-1510-002m-DFB	2mW	SMF-28	9um	Coaxial	FC/PC	V	X
	STLP-1510-005m-DFB	5mW	SMF-28	9um	Coaxial	FC/PC	V	X
	STLP-1510-005m-T-DFB	5mW	SMF-28	9um	Coaxial	FC/PC	V	V
	STLX-1510-005m-H8-T-DFB	5mW	SMF-28	9um	8-Pin	FC/PC	V	V
	STLP-1510-010m-DFB	10mW	SMF-28	9um	Coaxial	FC/PC	V	X
	STLX-1510-010m-H8-T-DFB	10mW	SMF-28	9um	8-Pin	FC/PC	V	V
	STLP-1510-005m-PM-DFB	5mW	PMF	9um	Coaxial	FC/APC	V	X
	STLP-1510-005m-PM-T-DFB	5mW	PMF	9um	Coaxial	FC/APC	V	V
	STLX-1510-005m-PM-H8-T-DFB	5mW	PMF	9um	8-Pin	FC/APC	V	V
	STLP-1510-010m-PM-DFB	10mW	PMF	9um	Coaxial	FC/APC	V	X
STLX-1510-010m-PM-H8-T-DFB	10mW	PMF	9um	8-Pin	FC/APC	V	V	
1530nm	STLP-1530-002m-DFB	2mW	SMF-28	9um	Coaxial	FC/PC	V	X
	STLP-1530-005m-DFB	5mW	SMF-28	9um	Coaxial	FC/PC	V	X
	STLP-1530-005m-T-DFB	5mW	SMF-28	9um	Coaxial	FC/PC	V	V
	STLX-1530-005m-H8-T-DFB	5mW	SMF-28	9um	8-Pin	FC/PC	V	V
	STLP-1530-010m-DFB	10mW	SMF-28	9um	Coaxial	FC/PC	V	X
	STLX-1530-010m-H8-T-DFB	10mW	SMF-28	9um	8-Pin	FC/PC	V	V
	STLP-1530-005m-PM-DFB	5mW	PMF	9um	Coaxial	FC/APC	V	X
	STLP-1530-005m-PM-T-DFB	5mW	PMF	9um	Coaxial	FC/APC	V	V
	STLX-1530-005m-PM-H8-T-DFB	5mW	PMF	9um	8-Pin	FC/APC	V	V
	STLP-1530-010m-PM-DFB	10mW	PMF	9um	Coaxial	FC/APC	V	X
STLX-1530-010m-PM-H8-T-DFB	10mW	PMF	9um	8-Pin	FC/APC	V	V	
1550nm	STLP-1550-002m-FP	2mW	SMF-28	9um	Coaxial	FC/PC	V	X
	STLP-1550-003m-DFB	3mW	SMF-28	9um	Coaxial	FC/PC	V	X
	STLP-1550-005m-DFB	5mW	SMF-28	9um	Coaxial	FC/PC	V	X
	STLX-1550-005m-H8-T-DFB	5mW	SMF-28	9um	8-Pin	FC/PC	V	V
	STLP-1550-010m-DFB	10mW	SMF-28	9um	Coaxial	FC/PC	V	X
	STLP-1550-010m-T-DFB	10mW	SMF-28	9um	Coaxial	FC/PC	V	V
	STLX-1550-010m-H8-T-DFB	10mW	SMF-28	9um	8-Pin	FC/PC	V	V
	STLP-1550-005m-PM-DFB	5mW	PMF	9um	Coaxial	FC/APC	V	X
	STLX-1550-005m-PM-H8-T-DFB	5mW	PMF	9um	8-Pin	FC/APC	V	V
	STLP-1550-010m-PM-DFB	10mW	PMF	9um	Coaxial	FC/APC	V	X
STLP-1550-010m-PM-T-DFB	10mW	PMF	9um	Coaxial	FC/APC	V	V	
STLX-1550-010m-PM-H8-T-DFB	10mW	PMF	9um	8-Pin	FC/APC	V	V	
1570nm	STLP-1570-002m-DFB	2mW	SMF-28	9um	Coaxial	FC/PC	V	X
	STLP-1570-005m-DFB	5mW	SMF-28	9um	Coaxial	FC/PC	V	X
	STLP-1570-005m-T-DFB	5mW	SMF-28	9um	Coaxial	FC/PC	V	V
	STLX-1570-005m-H8-T-DFB	5mW	SMF-28	9um	8-Pin	FC/PC	V	V
	STLP-1570-010m-DFB	10mW	SMF-28	9um	Coaxial	FC/PC	V	X
	STLX-1570-010m-H8-T-DFB	10mW	SMF-28	9um	8-Pin	FC/PC	V	V
	STLP-1570-005m-PM-DFB	5mW	PMF	9um	Coaxial	FC/APC	V	X
	STLP-1570-005m-PM-T-DFB	5mW	PMF	9um	Coaxial	FC/APC	V	V
	STLX-1570-005m-PM-H8-T-DFB	5mW	PMF	9um	8-Pin	FC/APC	V	V
	STLP-1570-010m-PM-DFB	10mW	PMF	9um	Coaxial	FC/APC	V	X
STLX-1570-010m-PM-H8-T-DFB	10mW	PMF	9um	8-Pin	FC/APC	V	V	

Note V – yes, N – No, O – Optional

Specifications

Wavelength	Part Number	Output Power	Fiber Type	Fiber Core	Package	Connector	PD	TEC
1590nm	STLP-1590-002m-DFB	2mW	SMF-28	9um	Coaxial	FC/PC	V	X
	STLP-1590-005m-DFB	5mW	SMF-28	9um	Coaxial	FC/PC	V	X
	STLP-1590-005m-T-DFB	5mW	SMF-28	9um	Coaxial	FC/PC	V	V
	STLX-1590-005m-H8-T-DFB	5mW	SMF-28	9um	8-Pin	FC/PC	V	V
	STLP-1590-008m-DFB	8mW	SMF-28	9um	Coaxial	FC/PC	V	X
	STLX-1590-008m-H8-T-DFB	8mW	SMF-28	9um	8-Pin	FC/PC	V	V
	STLP-1590-005m-PM-DFB	5mW	PMF	9um	Coaxial	FC/APC	V	X
	STLP-1590-005m-PM-T-DFB	5mW	PMF	9um	Coaxial	FC/APC	V	V
	STLX-1590-005m-PM-H8-T-DFB	5mW	PMF	9um	8-Pin	FC/APC	V	V
	STLP-1590-008m-PM-DFB	8mW	PMF	9um	Coaxial	FC/APC	V	X
STLX-1590-008m-PM-H8-T-DFB	8mW	PMF	9um	8-Pin	FC/APC	V	V	
1610nm	STLP-1610-002m-DFB	2mW	SMF-28	9um	Coaxial	FC/PC	V	X
	STLP-1610-005m-DFB	5mW	SMF-28	9um	Coaxial	FC/PC	V	X
	STLP-1610-005m-T-DFB	5mW	SMF-28	9um	Coaxial	FC/PC	V	V
	STLX-1610-005m-H8-T-DFB	5mW	SMF-28	9um	8-Pin	FC/PC	V	V
	STLP-1610-008m-DFB	8mW	SMF-28	9um	Coaxial	FC/PC	V	X
	STLX-1610-008m-H8-T-DFB	8mW	SMF-28	9um	8-Pin	FC/PC	V	V
	STLP-1610-005m-PM-DFB	5mW	PMF	9um	Coaxial	FC/APC	V	X
	STLP-1610-005m-PM-T-DFB	5mW	PMF	9um	Coaxial	FC/APC	V	V
	STLX-1610-005m-PM-H8-T-DFB	5mW	PMF	9um	8-Pin	FC/APC	V	V
	STLP-1610-008m-PM-DFB	8mW	PMF	9um	Coaxial	FC/APC	V	X
STLX-1610-008m-PM-H8-T-DFB	8mW	PMF	9um	8-Pin	FC/APC	V	V	
1625nm	STLP-1625-002m-DFB	2mW	SMF-28	9um	Coaxial	FC/PC	V	X
	STLP-1625-005m-DFB	5mW	SMF-28	9um	Coaxial	FC/PC	V	X
	STLP-1625-005m-T-DFB	5mW	SMF-28	9um	Coaxial	FC/PC	V	V
	STLX-1625-005m-H8-T-DFB	5mW	SMF-28	9um	8-Pin	FC/PC	V	V
	STLP-1625-008m-DFB	8mW	SMF-28	9um	Coaxial	FC/PC	V	X
	STLX-1625-008m-H8-T-DFB	8mW	SMF-28	9um	8-Pin	FC/PC	V	V
	STLP-1625-005m-PM-DFB	5mW	PMF	9um	Coaxial	FC/APC	V	X
	STLP-1625-005m-PM-T-DFB	5mW	PMF	9um	Coaxial	FC/APC	V	V
	STLX-1625-005m-PM-H8-T-DFB	5mW	PMF	9um	8-Pin	FC/APC	V	V
	STLP-1625-008m-PM-DFB	8mW	PMF	9um	Coaxial	FC/APC	V	X
STLX-1625-008m-PM-H8-T-DFB	8mW	PMF	9um	8-Pin	FC/APC	V	V	
1650nm	STLP-1650-002m-DFB	2mW	SMF-28	9um	Coaxial	FC/PC	V	X
	STLP-1650-005m-DFB	5mW	SMF-28	9um	Coaxial	FC/PC	V	X
	STLP-1650-005m-T-DFB	5mW	SMF-28	9um	Coaxial	FC/PC	V	V
	STLX-1650-005m-H8-T-DFB	5mW	SMF-28	9um	8-Pin	FC/PC	V	V
	STLP-1650-008m-DFB	8mW	SMF-28	9um	Coaxial	FC/PC	V	X
	STLX-1650-008m-H8-T-DFB	8mW	SMF-28	9um	8-Pin	FC/PC	V	V
	STLP-1650-005m-PM-DFB	5mW	PMF	9um	Coaxial	FC/APC	V	X
	STLP-1650-005m-PM-T-DFB	5mW	PMF	9um	Coaxial	FC/APC	V	V
	STLX-1650-005m-PM-H8-T-DFB	5mW	PMF	9um	8-Pin	FC/APC	V	V
	STLP-1650-008m-PM-DFB	8mW	PMF	9um	Coaxial	FC/APC	V	X
STLX-1650-008m-PM-H8-T-DFB	8mW	PMF	9um	8-Pin	FC/APC	V	V	

Note V – yes, N – No, O – Optional